

405 Single Mount Adaptors for Anemometers & Windvanes - 405 Series

The 405 range of Single Mount Adaptors are machined from aluminium alloy then anodised for corrosion resistance and long life. Fixings are stainless steel.

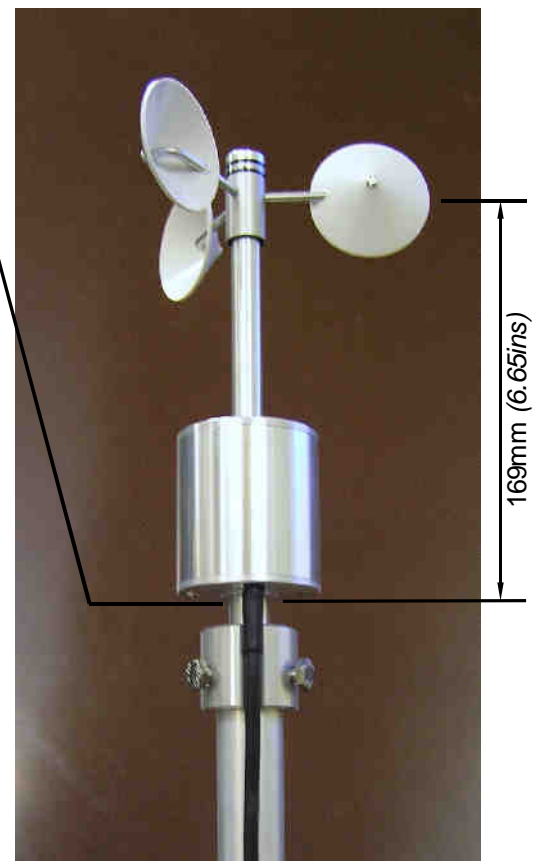
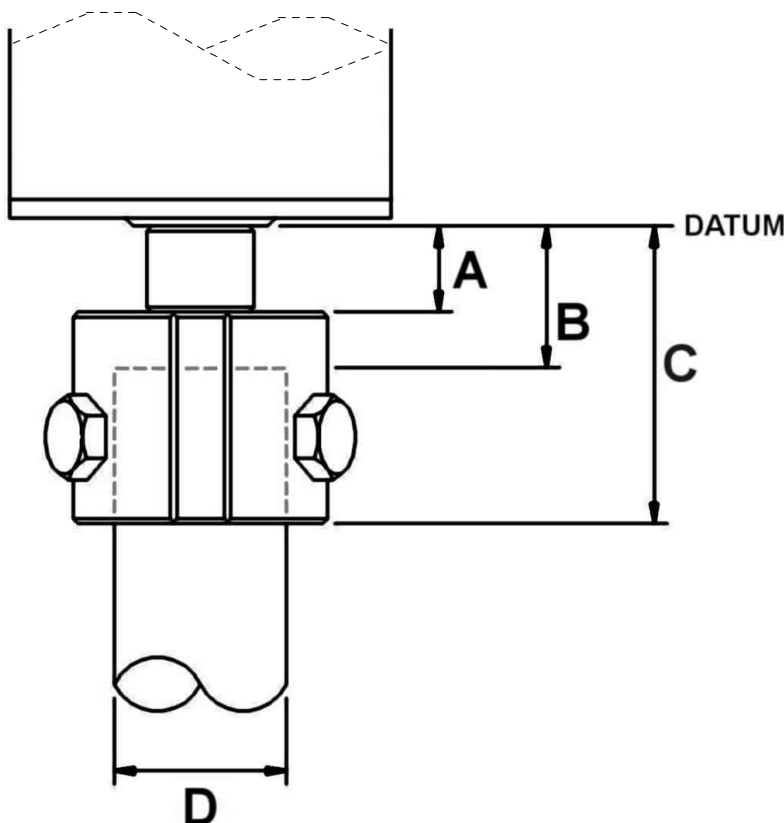
These mounting adaptors are designed to fit a range of mast/pole/boom top sizes in order to mount A100 Series Anemometers and W200 Series Windvanes (see table below).

The 405 (for 1inch pole) and 405/27P (for 27mm pole) both include a machined slot which allows the instrument cable to fit snugly against the mount.



Mount Type	A	B	C	D = Pole (or Boom) End Diameter.			Cable Slot	First Class Use?	Approx. Mount Weight
				Nominal	Max	Min			
405	12.7 mm (0.5 ins)	19.0 mm (0.75 ins)	44.0 mm (1.73 ins)	25.4 mm (1.000 ins)	25.6 mm (1.008 ins)	23.0 mm (0.905 ins)	Yes	Yes	80g (2.8 oz)
405/27P	12.7 mm (0.5 ins)	19.0 mm (0.75 ins)	46.5 mm (1.83 ins)	27.0 mm (1.063 ins)	27.4 mm (1.078 ins)	24.9 mm (0.980 ins)	Yes	Yes	86g (3.0 oz)
405/135	12.7 mm (0.5 ins)	19.5 mm (0.80 ins)	50.8 mm (2.00 ins)	33.2 mm (1.309 ins)	34.2 mm (1.346 ins)	31.7 mm (1.250 ins)	No	No	120g (4.2 oz)

Note: Rotor axis height is nominally 169 mm (6.65 ins) above "DATUM".



Use of the 405 type (or similarly sized 405/27P type) is recommended for high-accuracy applications, as the 405 mount is used for MEASNET calibrations of our anemometers and was also used for the classification tests. The increased bulk of the larger 405/135 mount interferes slightly with the airflow past the anemometer more and can have a small effect on the calibration and performance. We always advise that an anemometer is calibrated using the mounting adaptor (and representative pole) as will be used in the final installation. A version of the 405 to suit 0.5"/13mm poles is NOT available because such small poles are usually not strong/stiff enough to support our sensors.

Note: All dimensions are approximate. Specification and Prices subject to change at any time without notice, contact our sales office for latest pricing and availability details.

Vector Instruments

Vector Instruments (Windspeed Limited),
115 Marsh Road, Rhyl, North Wales, LL18 2AB, United Kingdom.
Tel: +44 (0) 1745 350700 Fax: +44 (0) 1745 344206
E-mail: sales@windspeed.co.uk Website: <http://www.windspeed.co.uk>

E&OE. All information herein is believed to be correct at time of writing but may change without notice. Contact us to confirm latest information.

All information is provided in Good Faith and Windspeed Limited (and its employees) shall NOT be responsible for any errors, omissions, injury, loss or damages of any kind howsoever caused.

051-021-01 (27MAR2010)

Vector Instruments